

SAFETY AND SCHOOL ENVIRONMENT

Non-CSAP Course Offerings

Your School Offers	does	does not
• art.....	<input checked="" type="checkbox"/>	<input type="checkbox"/>
• drama or theater.....	<input type="checkbox"/>	<input checked="" type="checkbox"/>
• music.....	<input checked="" type="checkbox"/>	<input type="checkbox"/>
• physical education.....	<input checked="" type="checkbox"/>	<input type="checkbox"/>
• opportunity for civic or community engagement.....	<input type="checkbox"/>	<input checked="" type="checkbox"/>
• internet safety program.....	<input checked="" type="checkbox"/>	<input type="checkbox"/>
• International Baccalaureate.....	<input type="checkbox"/>	<input checked="" type="checkbox"/>
• extracurricular activities.....	<input type="checkbox"/>	<input checked="" type="checkbox"/>
• athletics.....	<input type="checkbox"/>	<input checked="" type="checkbox"/>
• preschool program.....	<input type="checkbox"/>	<input checked="" type="checkbox"/>
• full-day kindergarten program.....	<input type="checkbox"/>	<input checked="" type="checkbox"/>
• before-and-after-school care program.....	<input checked="" type="checkbox"/>	<input type="checkbox"/>

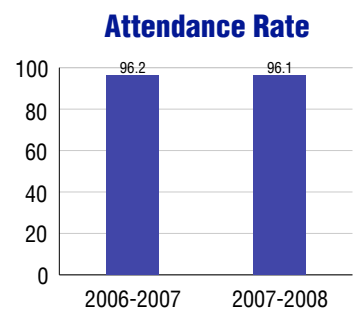
Safety and Discipline

Safe schools are a top priority for parents, teachers, and communities. Your school safety and discipline record for the 2007-2008 school year is:

Type of Incident	Number of Incidents Reported	Percent of Total Incidents
Substance Abuse - Drugs		
Substance Abuse - Alcohol		
Substance Abuse - Tobacco		
Felony Assaults		
Fights		
Possession of Dangerous Weapons		
Other Violations Code of Conduct	2	100.0%

Student Attendance and School Calendar

2007-2008	Your School
Enrollment	596
Average Daily Attendance	573
Student Dropouts	N/A



Student Information Over Time

	2005-2006	2006-2007	2007-2008
Student Enrollment Stability	97.9%	98.8%	99.0%
Students Eligible for Free and Reduced Lunch	0.4 %	1.0 %	1.3 %

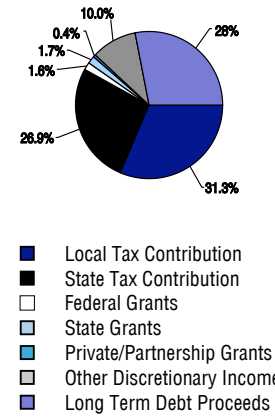
For more information and further details about this report, visit www.state.co.us/schools
 Colorado Department of Education, 201 East Colfax Ave. Denver, CO 80203
Timber Trail Elementary School
 0900/8853/E
 690 West Castle Pines Parkway . Castle Rock, CO 80108 . 303-387-5700
 10/20/2008

DISTRICT TAXPAYER'S REPORT

Sources of School District Revenue 2007

Local Tax Contribution	\$206,421,740
State Tax Contribution	177,436,179
Federal Grants	10,594,728
State Grants	11,290,085
Private/Partnership Grants	2,634,580
Other Discretionary Income	66,344,227
Total District Operating Revenue	\$474,721,539
Long Term Debt Proceeds	185,782,455
Total District Revenue	\$660,503,994
Total District Operating Revenue Per Pupil =	\$10,023
Total District Revenue Per Pupil (Including Long Term Debt) =	\$13,946
District Per Pupil Operating Revenue =	\$5,852
State Average Per Pupil Operating Revenue =	\$6,080

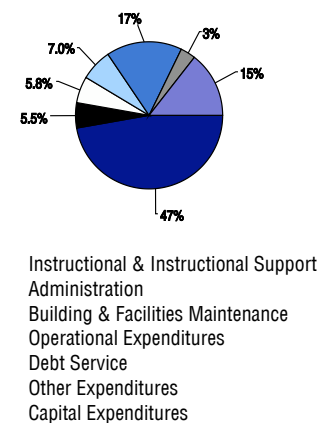
District Source of Funds 2007



District Use of Funds 2007

Instructional & Instructional Support	\$274,645,440
Administration	31,915,880
Building & Facilities Maintenance	33,772,675
Operational Expenditures	40,948,817
Debt Service	97,940,400
Other Expenditures	18,243,849
Total District Operating Expenditures	\$497,467,061
Capital Expenditures	84,439,654
Total District Use of Funds	\$581,906,715

District Use of Funds 2007



District Debt and Capital Construction & Equipment

Total Outstanding Bonded Debt	\$609,424,795
Average Annual Percentage Interest Rate on Debt	4.14%
Amount Raised from Most Recent Bond	\$147,635,000
Amount Spent on New Buildings During Last 2 Years	\$95,260,903

Accreditation

Accreditation is Colorado's primary accountability system, incorporating achievement levels, academic growth, achievement gaps, post-secondary readiness, improvement planning, and compliance. The state accredits districts and districts accredit individual schools.

District Accreditation Status for the 2007-2008 school year:

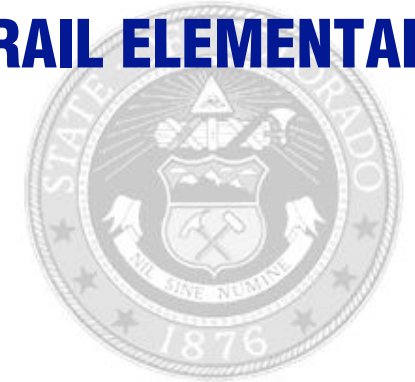
Voter Approved Funding Changes

Your community did /did not hold an election in November 2006

The following items have been approved by voters:

<input type="checkbox"/> TABOR Override	<input checked="" type="checkbox"/> Bond \$200,000,000	<input checked="" type="checkbox"/> Mill Levy Increase \$5,000,000
---	--	--

TIMBER TRAIL ELEMENTARY SCHOOL



DOUGLAS COUNTY RE 1

<http://www.dcsdk12.org/portal/page/portal/DCSD>

School Accountability Report 2007-2008 School Year

School Performance Summary

Overall Academic Performance on State Assessments **Excellent**

Academic Growth of Students **High**

Winner of a John Irwin School of Excellence for the 2007-2008 School Year

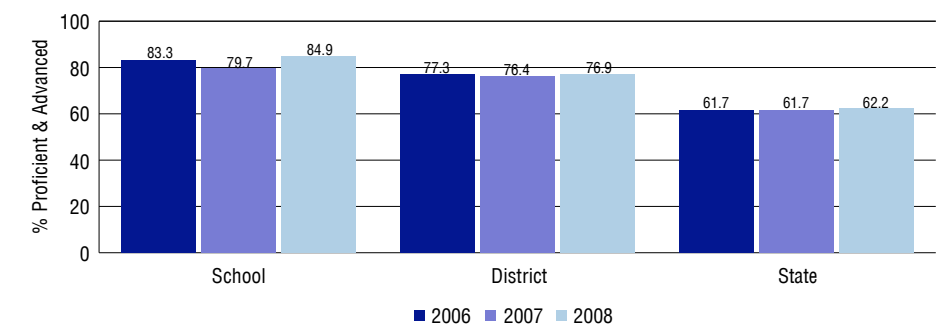
Overall Academic Performance on State Assessments

Each school in the State received a rating of "Excellent", "High", "Average", "Low", or "Unsatisfactory" for student academic performance based on 2007-2008 CSAP and COACT results. The rating is calculated using weighted percentages of each CSAP proficiency level for all content area and grade results for the school, as well as average COACT Reading, Writing, and Math Grade 11 results.

Academic Growth of Students

Each school in the State received a rating of "Low", "Typical", or "High" for student academic growth based on CSAP results. The calculation method is new for 2007-2008. The rating is calculated using student percentile scores matched over two years. More information about the Overall Academic Performance rating and Academic Growth of Students calculations can be found here: http://www.cde.state.co.us/cdeassess/SAR_Info.html.

Percent Proficient and Advanced for Elementary Grades for All Content Areas



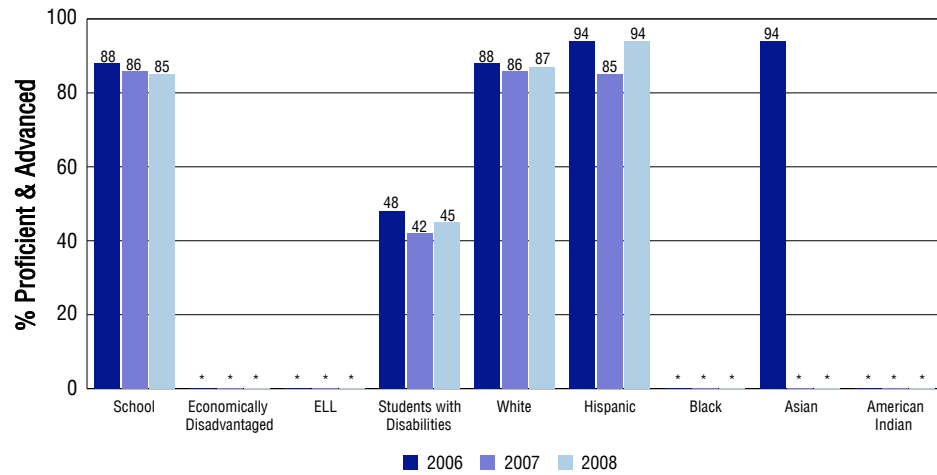
Student Test Scores Used For Calculating Overall Academic Performance

98.0%	Test Scores Counted
1.0%	Test Scores not used due to Language
1.0%	Test Scores not used due to New Student

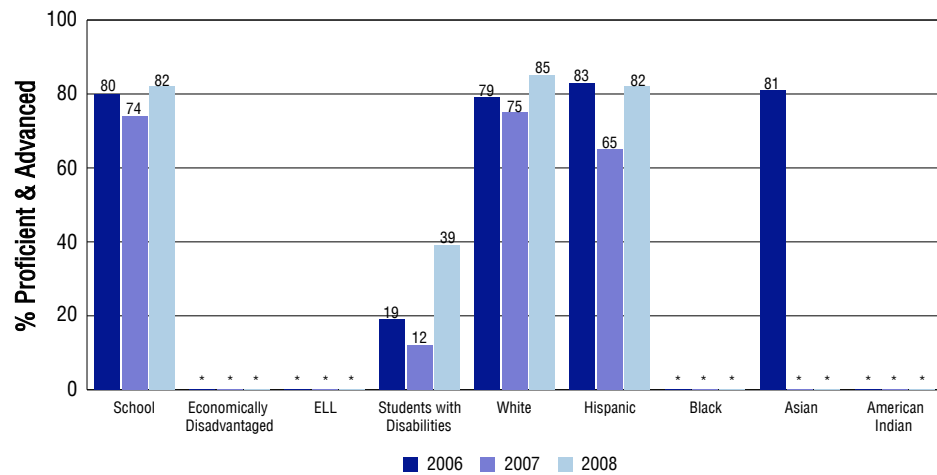
STUDENT PERFORMANCE

These graphs show the percent Proficient and Advanced trends over the past three years for Reading, Writing, and Math. Results are presented for the entire school for all reported grades as well as for different subgroups. Note: * indicates any group with less than 16 student results to be reported.

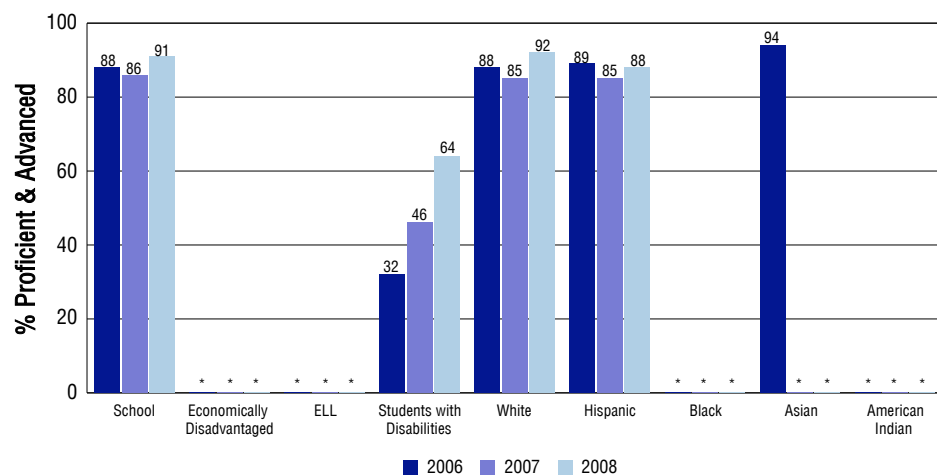
Reading



Writing



Math



SCHOOL INFORMATION

School Pride (as submitted by your district)

- See DCSD's Annual School Report
-
-
-

School Goals (as submitted by your district)

See DCSD's Annual School Report

No Child Left Behind - Adequate Yearly Progress

Did your school make AYP in reading?	No	Math?	Yes
How many targets does your school have?	18	Met?	17

Based on this school's academic performance, your child may be eligible for one or more of the following; ask your school if your child qualifies for:

Extra academic instruction either before or after-school, or in the summer
Mentoring

For additional information regarding Adequate Yearly Progress please visit
<http://www.cde.state.co.us/FedPrograms/ayp/index.asp>

How Timber Trail Elementary School Compares To Elementary Schools Within A 75-Mile Radius

School	Program Type	Academic Performance	Academic Growth
Buffalo Ridge Elementary School		High	High
D C S Montessori Charter School	Charter	High	Typical
Sedalia Elementary School		High	Typical
Wildcat Mountain Elementary School		High	Typical
Meadow View Elementary School		High	Typical
Academy Charter School	Charter	High	High
Heritage Elementary School		High	High
Redstone Elementary School		Excellent	Typical
Fox Creek Elementary School		Excellent	High
Lone Tree Elementary	Magnet	Average	Low

ABOUT OUR STAFF

School Employment

Each year, your district reports to the Colorado Department of Education on the number of adults who work in your school, as well as the type of work they do. Last year, your school employed:

	Your School		District	
	Full Time	Part Time	Full Time	Part Time
Teachers	33	7	2808	273
Paraprofessionals	14	4	1040	391
Administrators	2	0	224	3
Other Professionals	2	2	392	203
School Support	5	5	927	523
School Counselors	0	0	59	9
School Librarians	0	0	26	2
Total Staff	73		6840	

Students per Teacher Ratio

	Student Enrollment	Students per Teacher
Grade 1	106	16.6
Grade 2	108	16.9
Grade 3	104	16.3
Grade 4	89	16.6
Grade 5	80	12.6

Professional Experience of Teachers

	Your School	District
Average years of teaching experience	8	10
Percent of teachers teaching in the subject in which they received their degree	N/A	N/A
Number of teachers with Masters or Doctoral degrees	26	1868
Teachers with 3 years or more of teaching experience	33	2575
Teachers with less than 3 years of teaching experience	7	506
Number of professional development days	5	5

Salaries

	Your School	District	State
Average Teacher Salary	\$49,903	\$52,078	\$47,494
Average Administrator Salary	\$68,129	\$87,164	\$80,444

Principal: Michele Radke

Number of years as Principal at this school: 1 (New Hire 2007/2008)

Number of years as Principal at any school: 1